

Ju/'Hoansi

- a.k.a !Kung San
- Khoi / San
- Called "bushmen" by Dutch
- Dobe (evidence of settlements 20-40,000 y.)
- European contact began in 19th Century (Chapman 1868)
- Early 20th C. Germans colonize Namibia forcing Herero to Botswana
- Government presence 1934-
- Kalahari Research 1951-

- Richard B. Lee believes that the success of the Ju/'hoansi both in the past and in the face of rapid change, is sustained by an adherence to a **communal/kin-ordered mode of production** that calls for a community of sharing and egalitarianism.
- He supports this by showing that the key features of traditional Dobe Ju/'hoansi culture--widespread social relations
 - formed through real and fictive kinship and maintained through gift giving,
 - an egalitarian political order
 - relatively little effort in the food quest
 - and a elaborate ritual and religious belief system

- He also touches on the negative aspects of the Ju/'hoansi society:
 - the low-but-present homicide rate, their affinity for alcohol and tobacco
 - the detrimental changes and social decomposition brought on by outside influences.

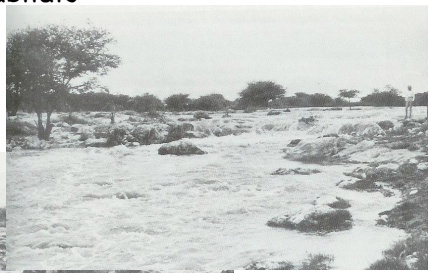
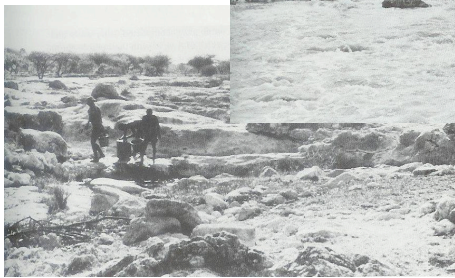
ENVIRONMENT AND SETTLEMENT

• Fauna: 260 named species

• Flora: 90 edible plants

• Distinguish 4 Habitats

• 5 Seasons



SUBSISTENCE

• Gathering: Mongongo nuts

• Hunting: Insulting the meat

• Work effort and caloric intake

• Ju/hoan subsistence: Affluence or Anxiety?



Kinship system

• Kinship is the central organizing principle in band societies. They have 3 systems

◦ Kinship I- nuclear

◦ Kinship II- names and naming

◦ Kinship III- wi

Marriage and Sexuality

- ◉ By arrangement
- ◉ Bride service
- ◉ Girls marry between 12-16, boys between 18-25
- ◉ 93% monogamous
- ◉ Divorce?

Sexuality

- ◉ Sexual play
- ◉ Homosexuality, bisexuality, uncommon but does occur

Conflict, Politics, Exchange

- ◉ Ownership (groups, not individual)
- ◉ nlore (waterhole and land around it) claimed by group.
- ◉ Closer to 'Resource management' than owners
- ◉ Headman?

Levels of conflict

- Talking
- Fighting
- Deadly fighting

- Laughter

Xharo

- gift exchange (reciprocity)-long term exchanges.

- Exchange system
 - generalized reciprocity-no expectation of immediate return
 - balanced reciprocity-expects something in return
 - negative reciprocity-unequal exchange

Spirituality

- //gangwasi (ghosts of recently deceased)
- n/um- spiritual remedies
