

EnvSci 360 – Computer and Analytical Cartography

Lecture 8

Cartographic Representations and Other Advanced Symbology Techniques



Storing Symbology

✦ In an **MXD**



- Only lives in the map document

✦ In a **Layer File**



- May be shared among users and MXDs

*Both store pointers to data sources
(either with relative or full paths)*

Map and Layer Packages

✦ Map packages (.mpk)

- Contains a map document (.mxd) and the data referenced by the layers it contains, packaged into one file.

<http://desktop.arcgis.com/en/arcmap/latest/map/working-with-arcmap/creating-a-map-package.htm>

✦ Layer package (.lpk)

- Includes both the layer properties (the .lyr) and the dataset referenced by the layer.

<http://desktop.arcgis.com/en/arcmap/latest/map/working-with-arcmap/creating-a-layer-package.htm>

ArcPublisher/ArcReader

- ✦ **ArcPublisher:** Extension to ArcGIS that allows a map (all layers with their symbology, labels, queries, full layout, etc.) to be “published” as PMF
- ✦ **ArcReader:** Free software to read PMFs
 - Similar in concept to Adobe PDF files read in free Acrobat Reader
- ✦ You can package data with PMF or point to local, network, or Web data sources

See <http://www.esri.com/software/arcgis/arcreader/>

Storing Symbology

✦ **Cartographic Representations**

- Stored with the feature geometry inside geodatabase feature classes
 - Column(s) added to feature class attribute tables
 - A feature class can have more than one representation associated with it, allowing the same data to be displayed uniquely on different maps for different purposes

<http://desktop.arcgis.com/en/arcmap/latest/map/working-with-layers/what-are-representations-.htm>

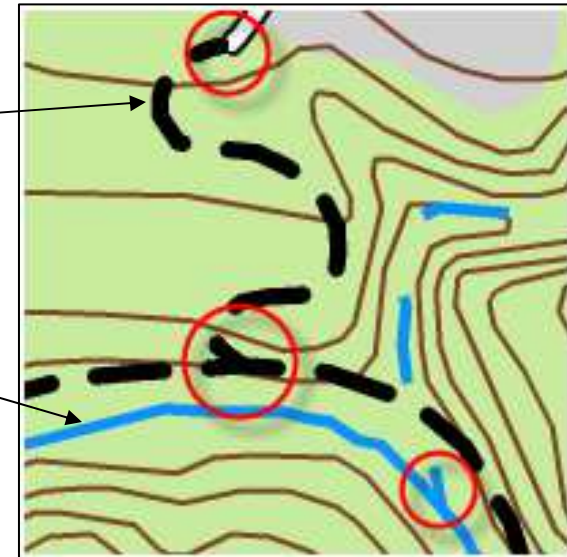
Why Use Representations?

- ✦ **Improve the display of features in ArcMap for cartography, based on rules**



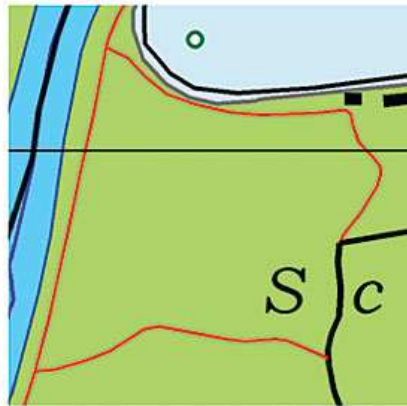
Conventional symbology

Trails,
roads,
and
rivers

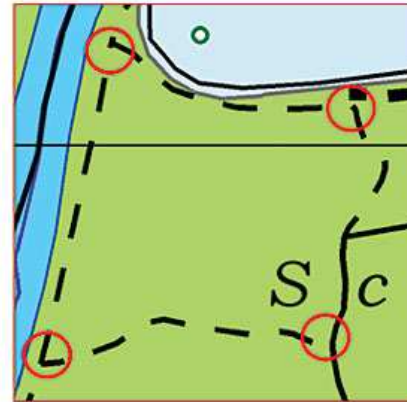


Representation symbology

Why Use Representations?



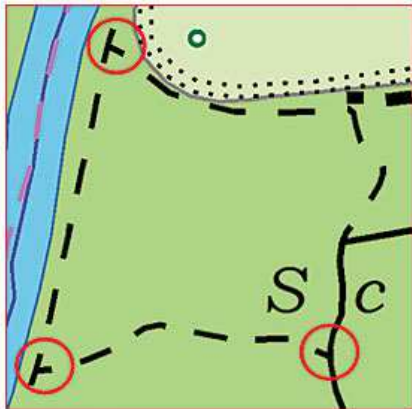
Stage 1 –
Linear
Features
(Tracks)



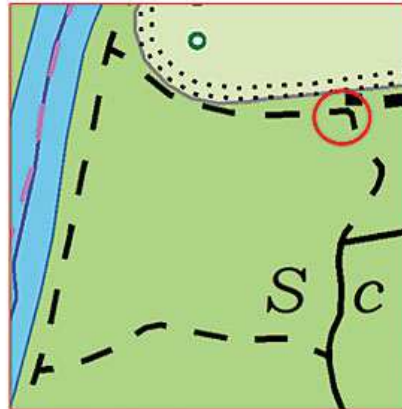
Stage 2 –
GIS Dash
Symbol
(Bad joins
and bends)

**Example:
Converting
existing
symbology**

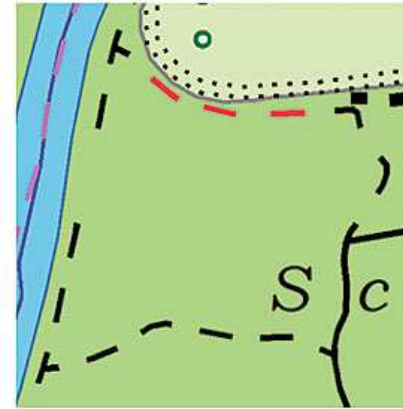
Stage 3 – Automatic
Representation



Stage 4 – Graphic
Override



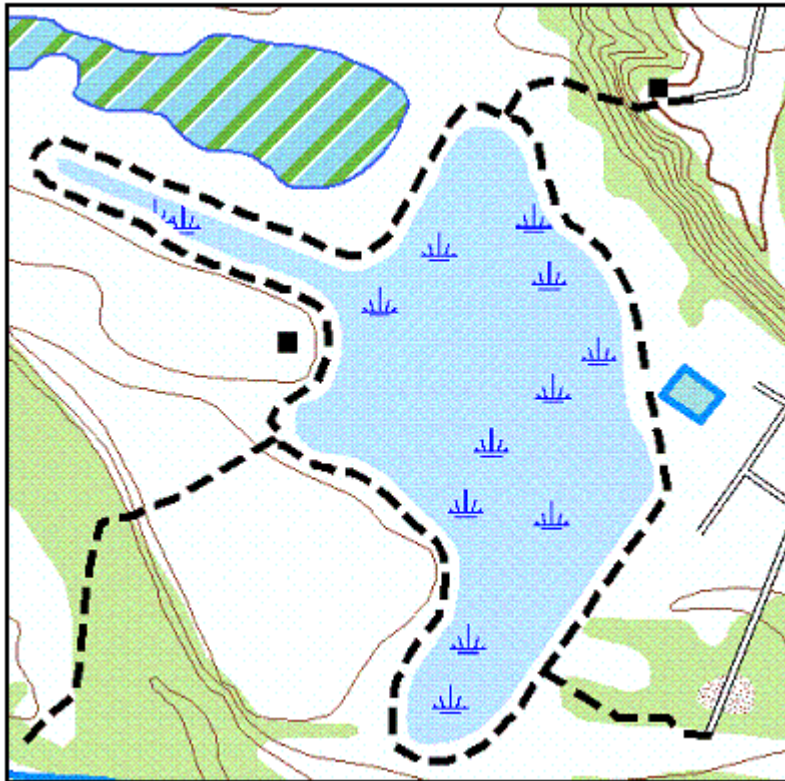
Stage 5 – Free
Representation



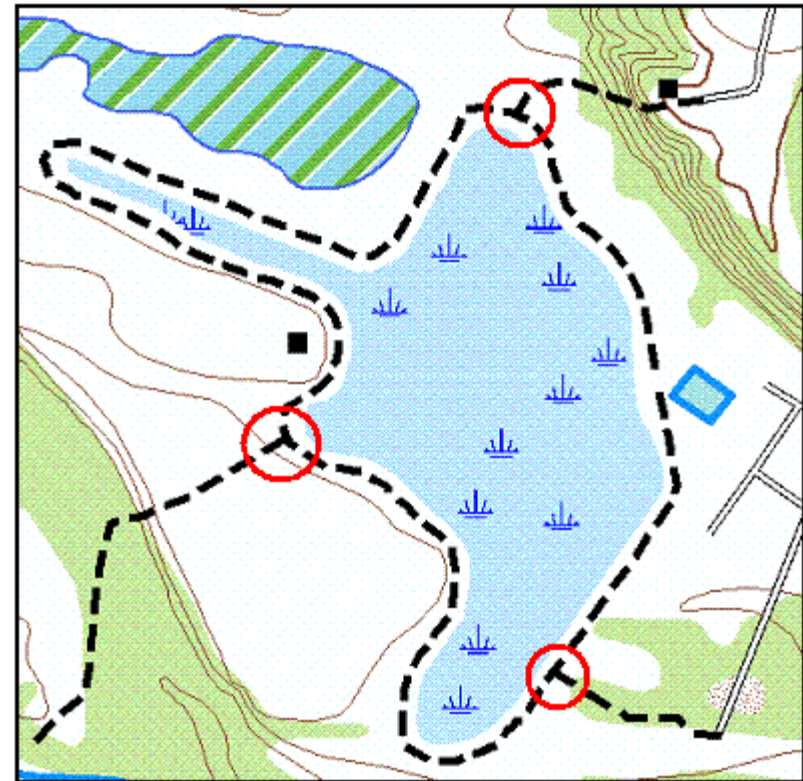
Why Use Representations?

Example: *Converting existing symbology*

Line features in a feature class drawn with a default dashed line symbol



Line features in a feature class representation drawn with a stroke symbol layer and a dash geometric effect

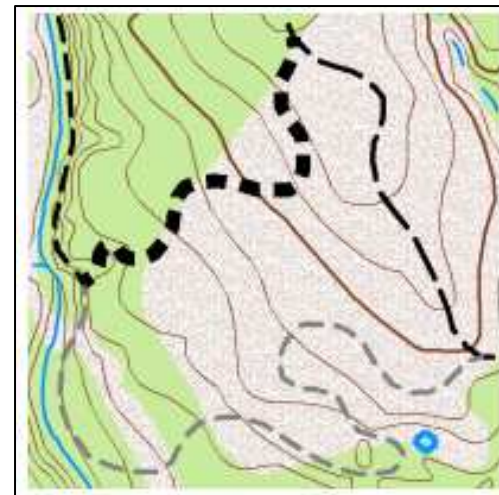


Why Use Representations?

- ✦ **Customize the display of individual features within a feature class (rule overrides)**



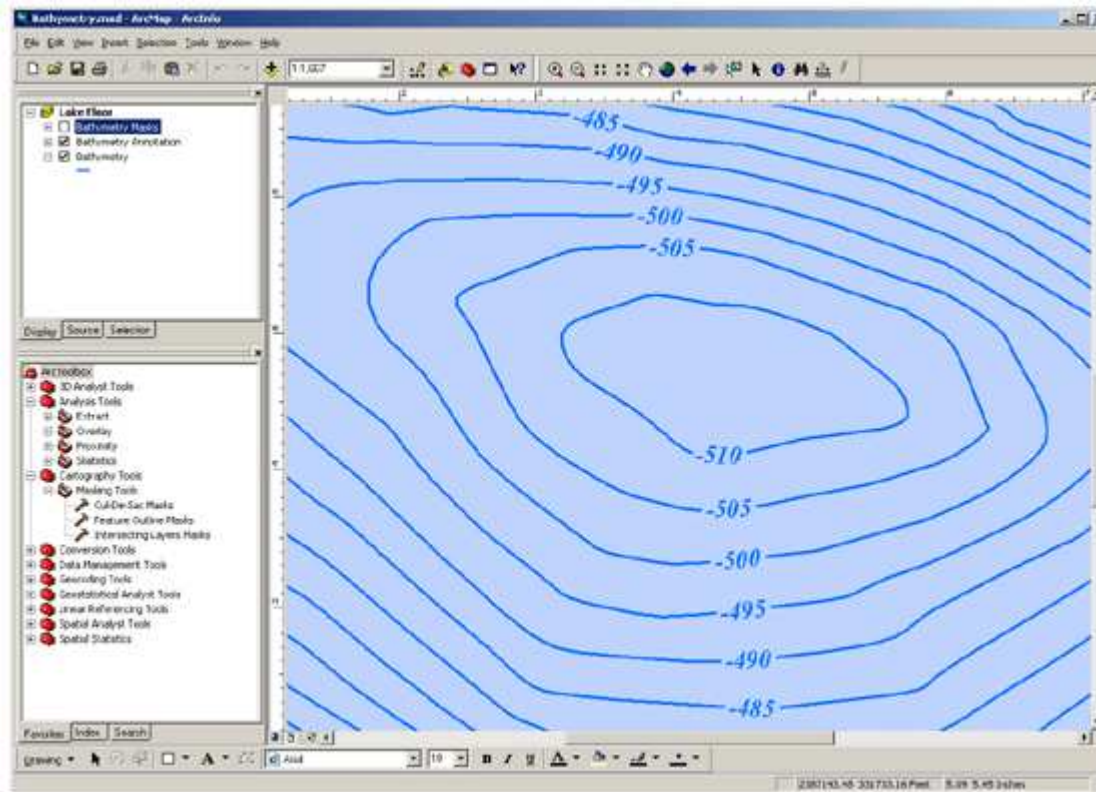
Trail line features symbolized with a dashed stroke representation rule



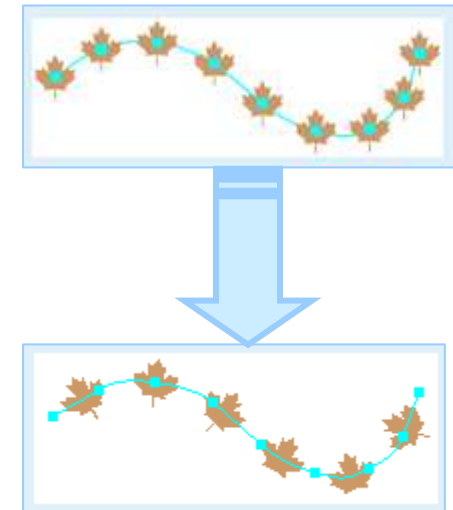
Stroke weight and color overridden to emphasize different trail types

Why Use Representations?

✦ Feature masking for labels

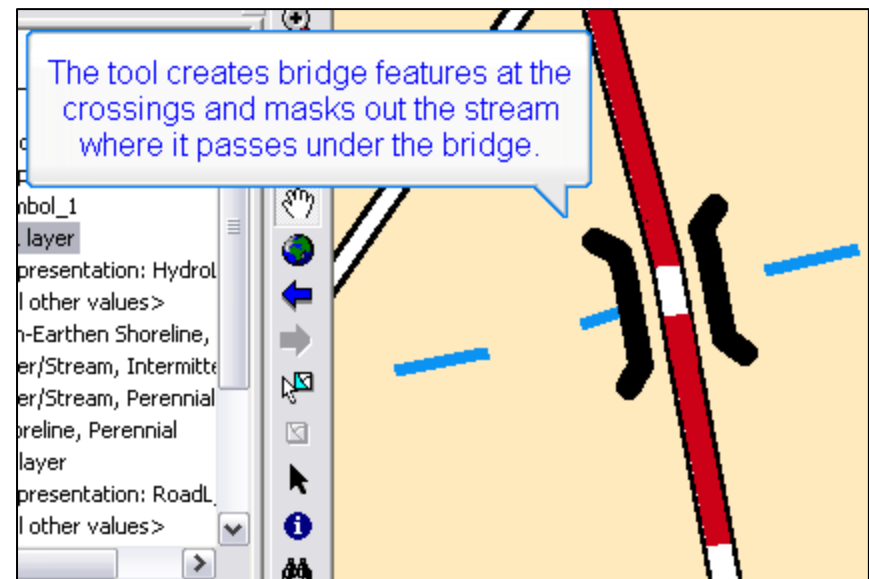
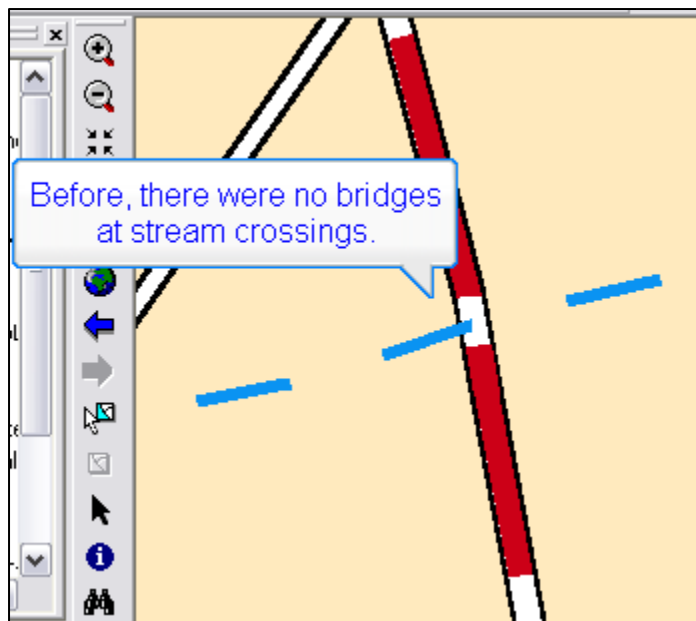


✦ Orientation of marker symbols



Why Use Representations?

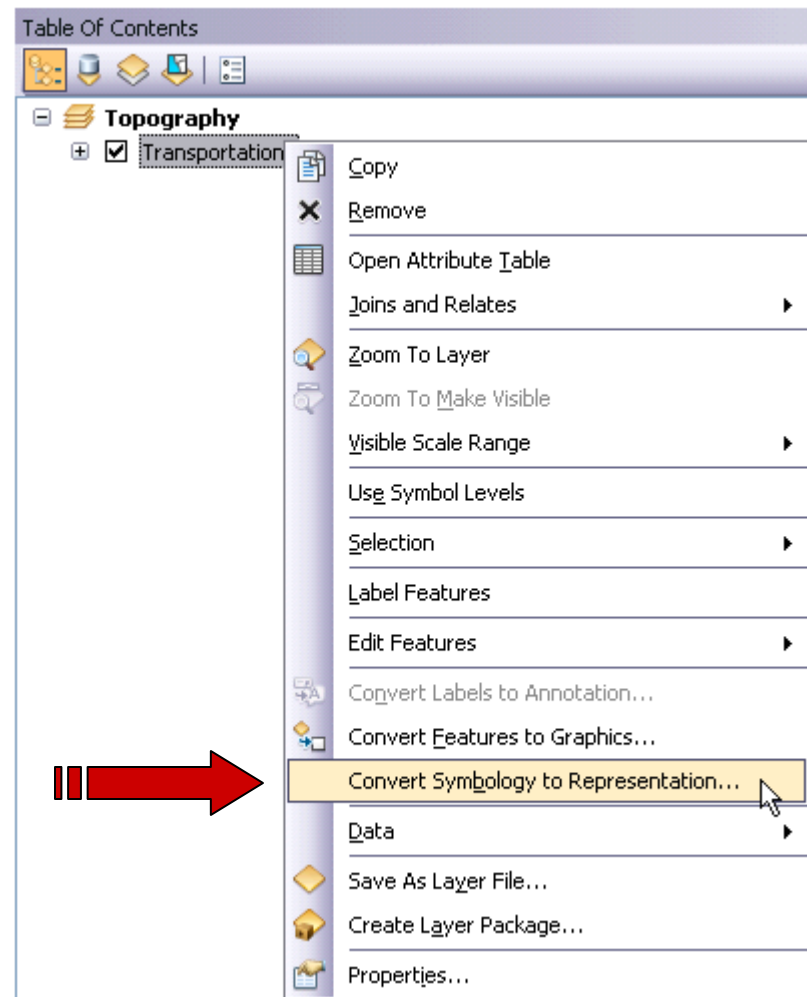
✦ Creating overpasses



For more, see: <http://desktop.arcgis.com/en/arcmap/latest/map/working-with-layers/frequently-asked-questions-about-representation.htm> and <http://desktop.arcgis.com/en/arcmap/latest/map/main/mapping-and-visualization-in-arcgis-for-desktop.htm>

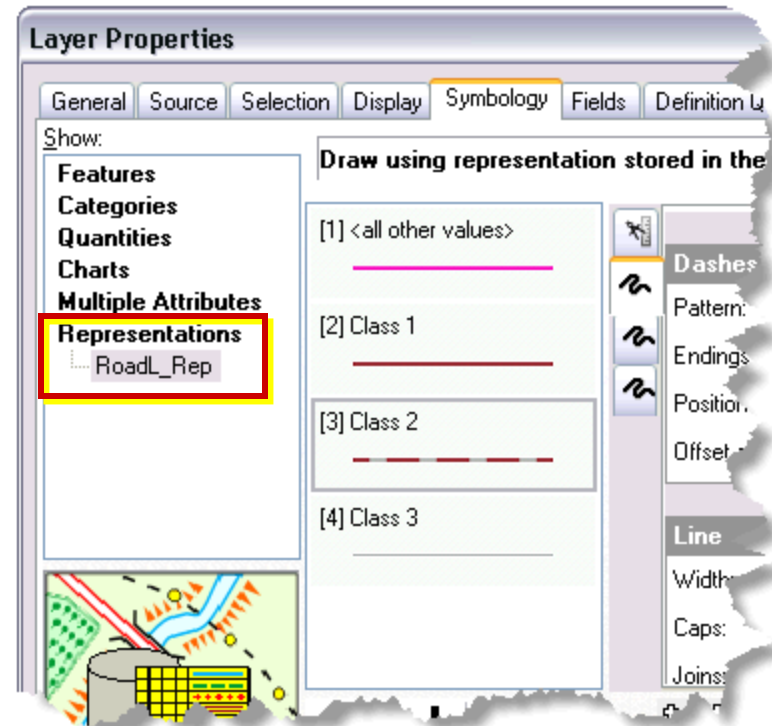
Creating Representations

- ✦ Symbolize the data in ArcMap, then right-click the feature class in the table of contents and choose 'Convert Symbology to Representation...'
 - Must use ArcEditor or ArcInfo license



Using Representations

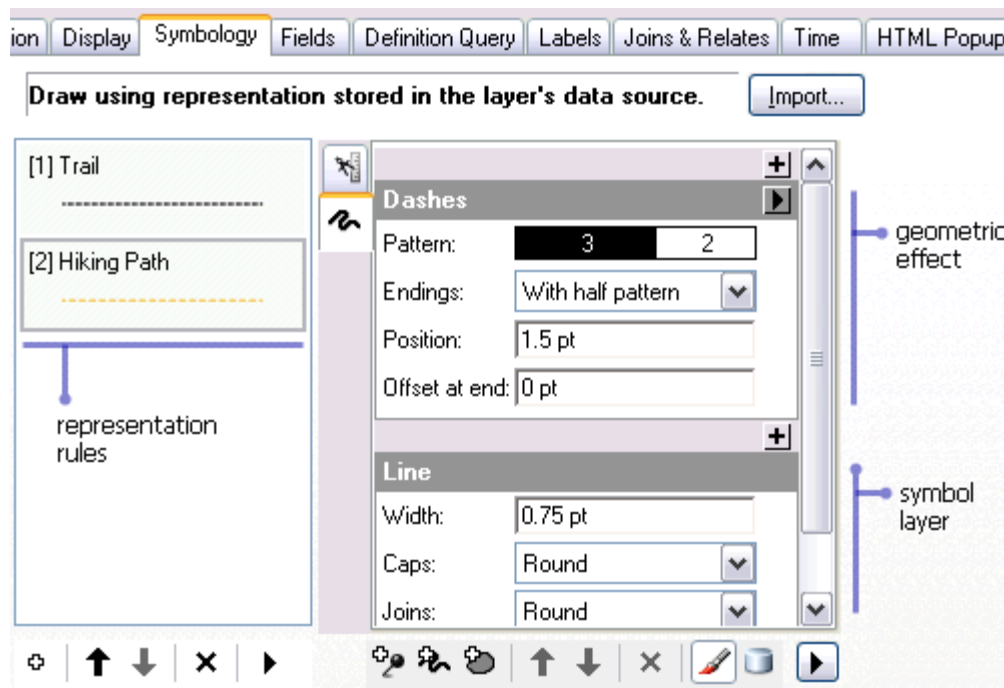
- ✦ The Symbology tab on the Layer Properties dialog box will show a 'Representations' heading in the left column if at least one representation is present.
- ✦ Choose a representation from this column to use to draw the features. Modify the properties of the rules if desired.



Working With Representations

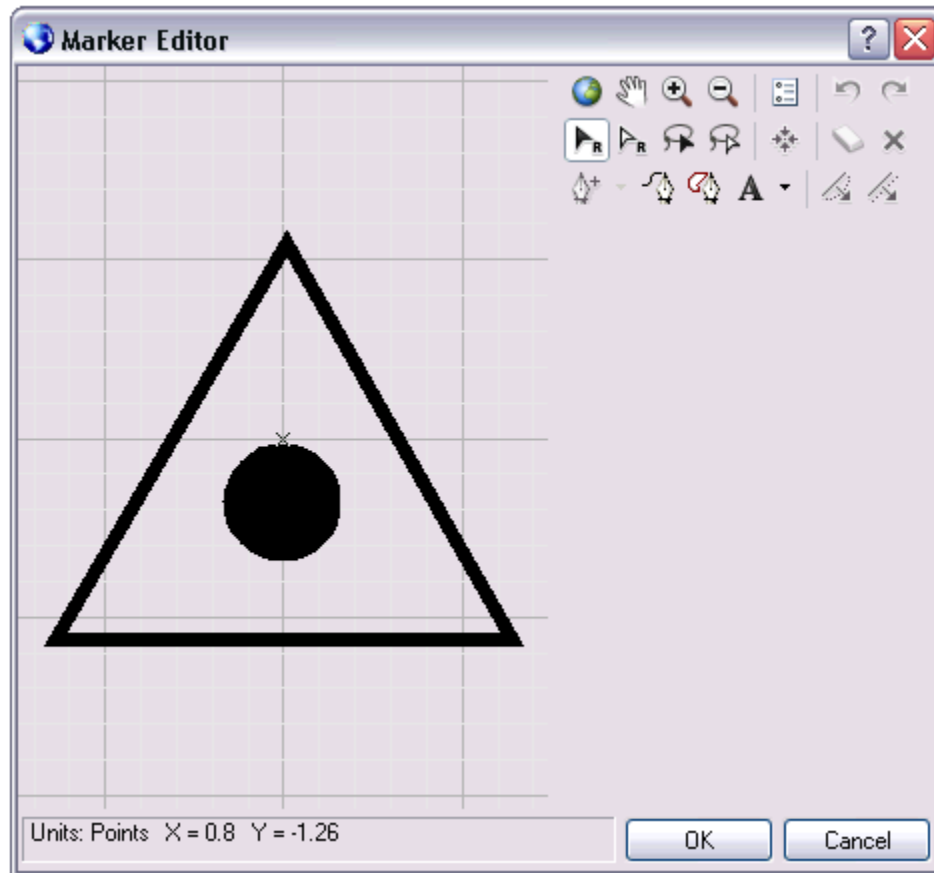
✦ See "A quick tour of representations" in the ArcGIS Desktop Help

- <http://desktop.arcgis.com/en/arcmap/latest/map/working-with-layers/a-quick-tour-of-cartographic-representations.htm>



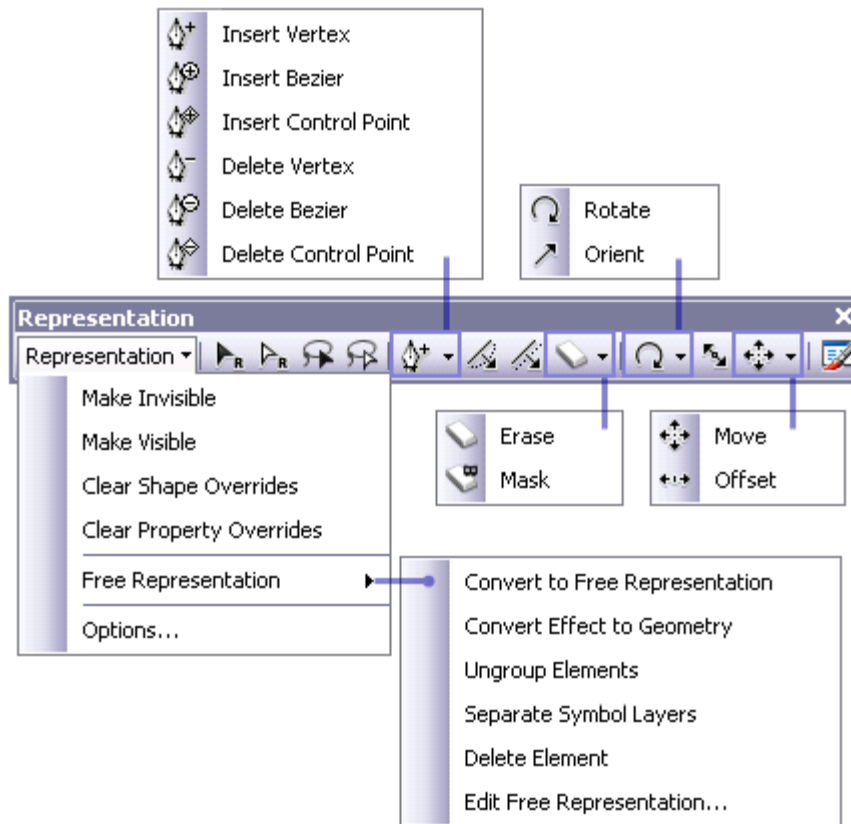
Modify rules to adjust symbol layer properties, add geometric effects, and modify marker placement styles

Working With Representations



**Use the
Marker Editor
dialog box to
modify
representation
markers**

Working With Representations



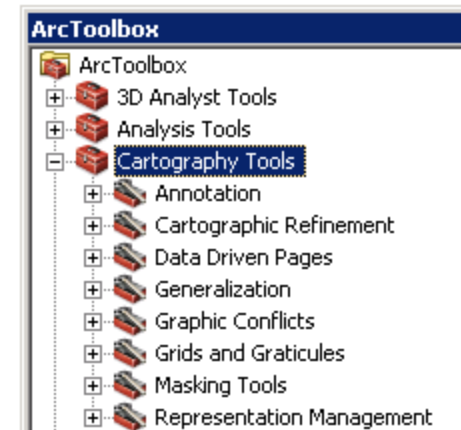
Use the Representation Toolbar to create and modify overrides (exceptions made to a representation rule on individual features)

A free representation has its own representation rule not associated with any other feature, allowing full customization and control over appearance.

Also See...

- ✦ ArcNews article "Putting the "Art" Back into Cartography"
 - <http://www.esri.com/news/arcnews/winter0506articles/putting-the-art.html>
- ✦ Other Representation Help topics, including the Tutorial
- ✦ Cartography Tools Toolbox
 - Some require Advanced license, not Standard

<http://desktop.arcgis.com/en/arcmap/latest/tools/cartography-toolbox/cartography-toolbox-license.htm>



Generalization

- ✦ Processes that refine features for display at smaller scales or to improve aesthetic or cartographic quality
 - Simplify, smooth, thin, aggregate, collapse, merge, delineate

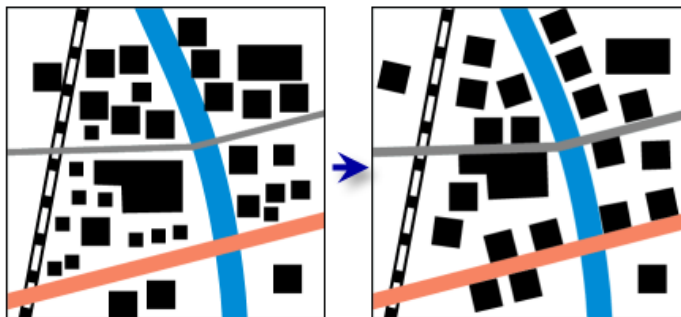
<http://desktop.arcgis.com/en/arcmap/latest/tools/cartography-toolbox/an-overview-of-the-generalization-toolset.htm>

- Generalization
 - Aggregate Points
 - Aggregate Polygons
 - Collapse Dual Lines To Centerline
 - Collapse Road Detail
 - Create Cartographic Partitions
 - Delineate Built-Up Areas
 - Merge Divided Roads
 - Simplify Building
 - Simplify Line
 - Simplify Polygon
 - Smooth Line
 - Smooth Polygon
 - Thin Road Network

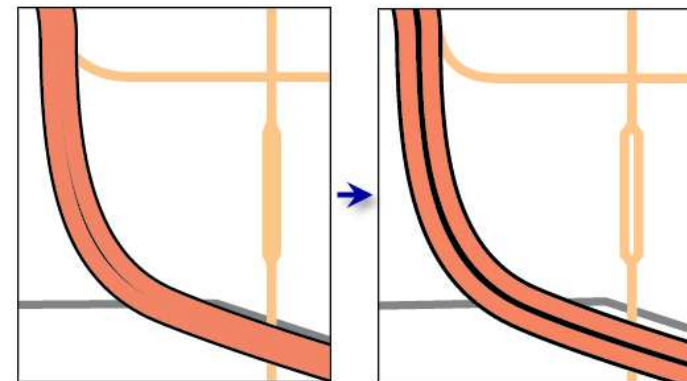
Graphic Conflicts Tools

✦ Detect and resolve graphic conflicts among symbolized features

- Graphic Conflicts
- Detect Graphic Conflict
- Propagate Displacement
- Resolve Building Conflicts
- Resolve Road Conflicts



Resolve Building Conflicts



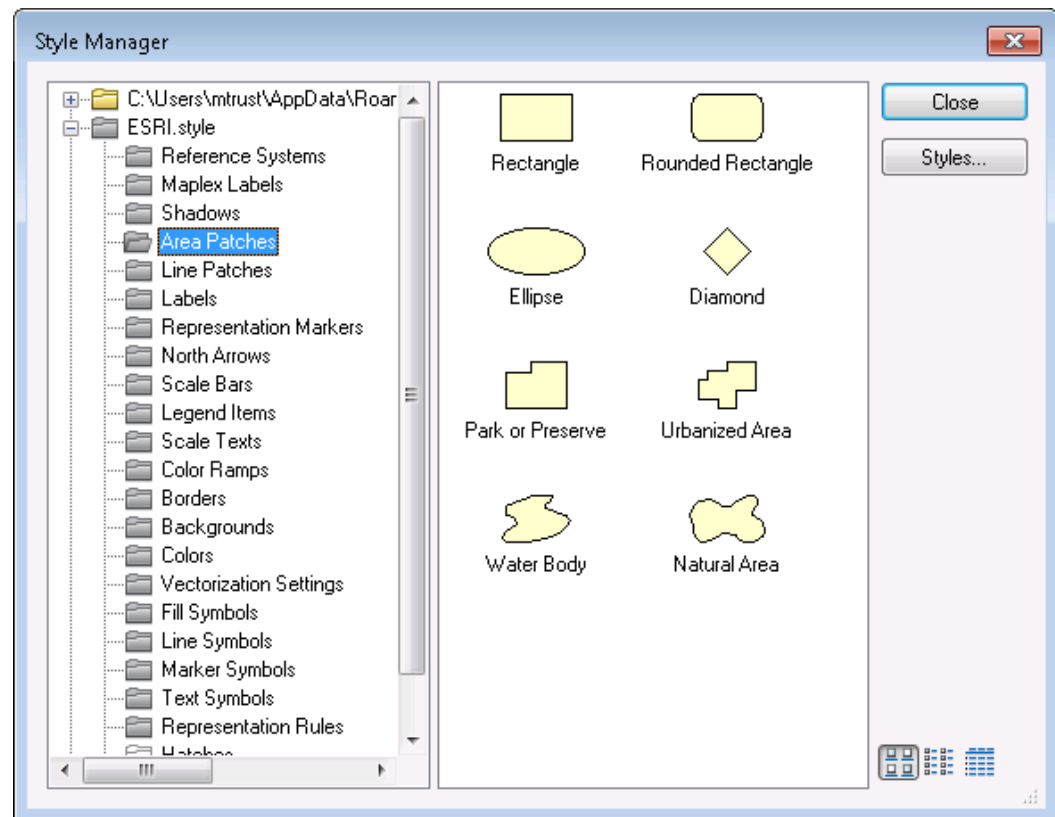
Resolve Road Conflicts

<http://desktop.arcgis.com/en/arcmap/latest/tools/cartography-toolbox/an-overview-of-the-graphic-conflicts-toolset.htm>

Style Manager

- ✦ Organize styles and their contents (symbols and map elements). You can cut, copy, paste, rename, and modify any style contents, and you can create new styles, symbols, and map elements.

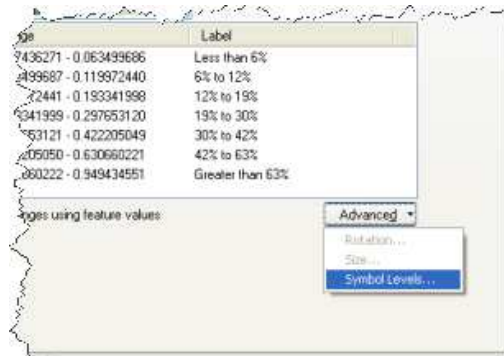
From Customize menu in ArcMap



<http://desktop.arcgis.com/en/arcmap/latest/map/styles-and-symbols/managing-style-contents.htm>

Symbol Levels

- ✦ Not part of Representations
- ✦ May be used with any vector data symbology
- ✦ Use with any license level



Without using advanced symbolization



Using Symbol Level Drawing

<http://desktop.arcgis.com/en/arcmap/latest/map/working-with-layers/what-is-symbol-level-drawing-.htm>

<http://desktop.arcgis.com/en/arcmap/latest/map/working-with-layers/working-with-symbol-level-drawing.htm>

<http://desktop.arcgis.com/en/arcmap/latest/map/working-with-layers/displaying-roads-using-symbol-level-drawing.htm>

Symbol Levels

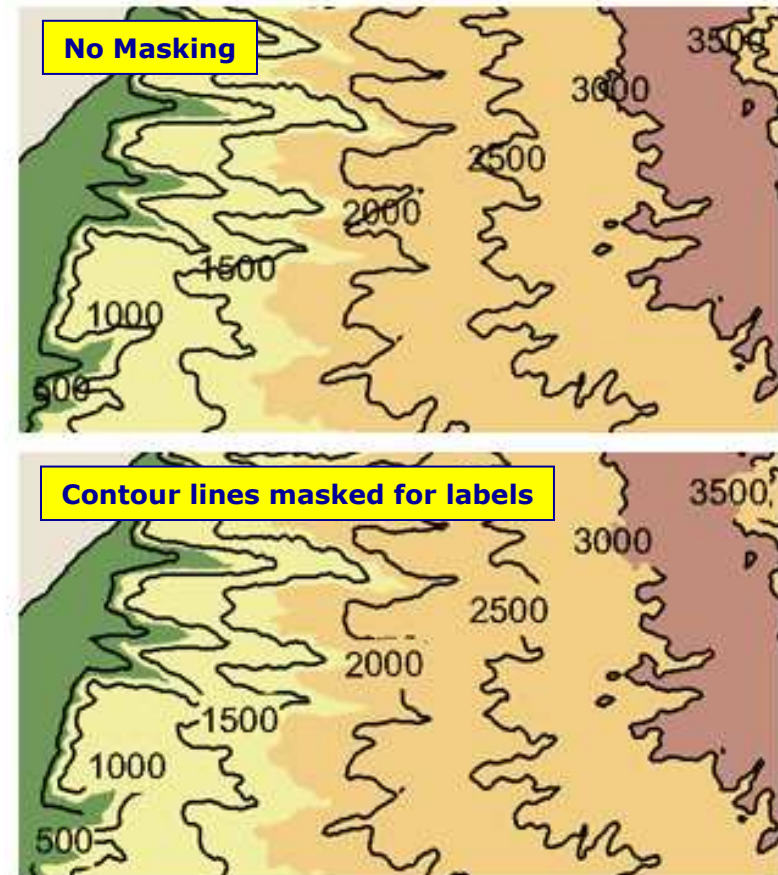
- ✦ Polygon example – Dissolve to merge adjacent polygons that share common values



<http://desktop.arcgis.com/en/arcmap/latest/map/working-with-layers/dissolving-polygon-boundaries-using-symbol-level-drawing.htm>

Masking

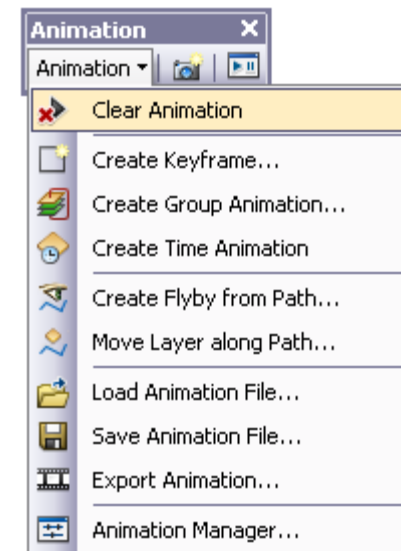
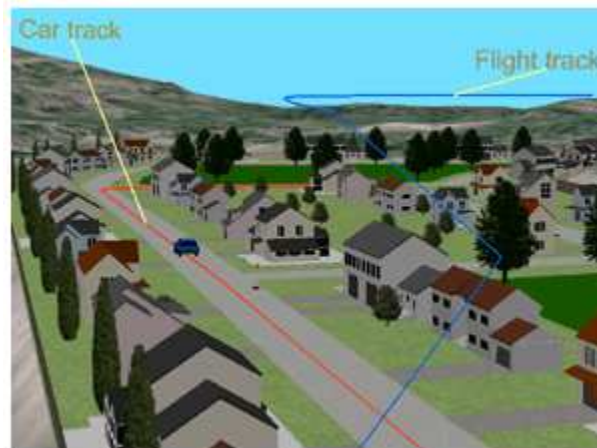
- ✦ Not part of Representations
- ✦ A drawing technique used to hide parts of layers that are drawn underneath symbols and annotation
- ✦ Requires Advanced license level



<http://desktop.arcgis.com/en/arcmap/latest/map/working-with-layers/using-masking.htm>

Animation

- ✦ Visualize changes through time or along a path
 - 2-D: ArcMap
 - 3-D: ArcScene, ArcGlobe

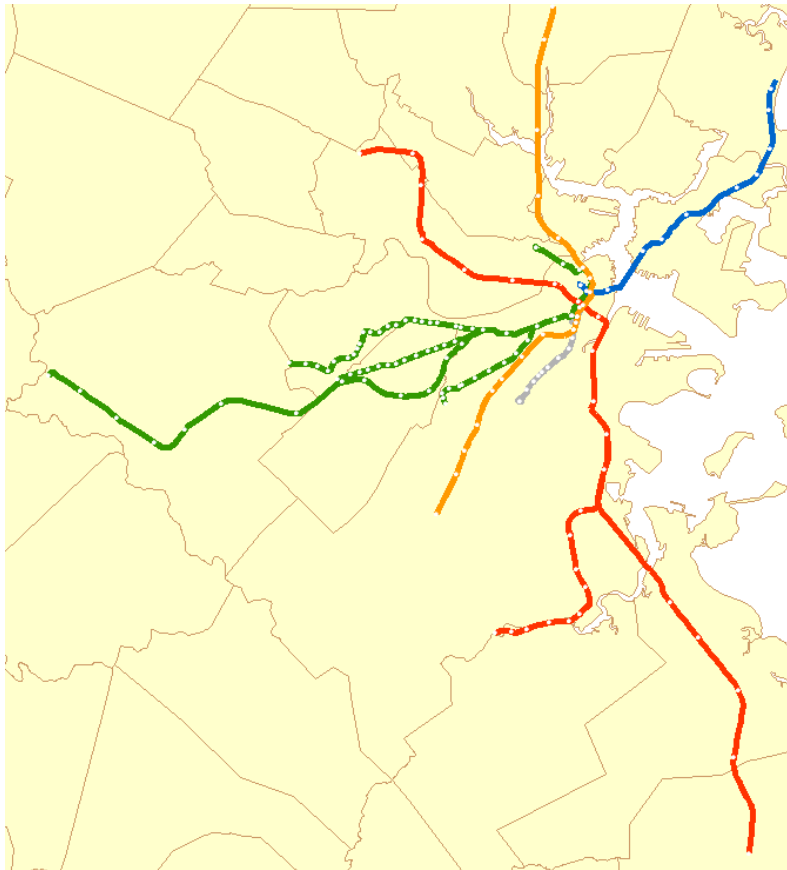


<http://desktop.arcgis.com/en/arcmap/latest/map/animation/what-is-an-animation.htm>
<https://www.youtube.com/watch?v=2gF8cujoOic>
<https://www.youtube.com/watch?v=tGOTmgthQxE>
<https://www.youtube.com/watch?v=qQaj233WAa0>
<https://www.youtube.com/watch?v=4EWzymZ6qD0>

Cartograms

- ✦ Maps on which the geographic features are distorted (shape, area, distance, location) in the interests of a specific objective
 - To reveal patterns or promote legibility
 - Examples:
 - The size of a geographical area is drawn proportionately to the value of the data it contains (Good example: **election maps** – see <http://www-personal.umich.edu/~mejn/election/2016/>).
 - Linear cartogram of **subway system** map.

Cartograms

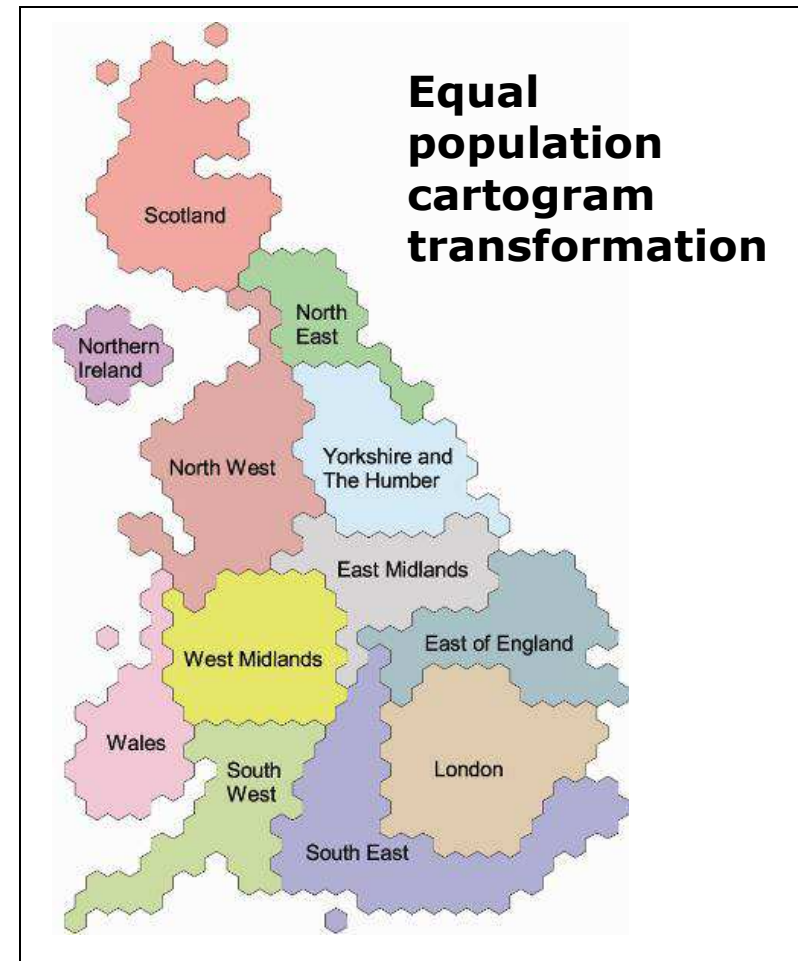
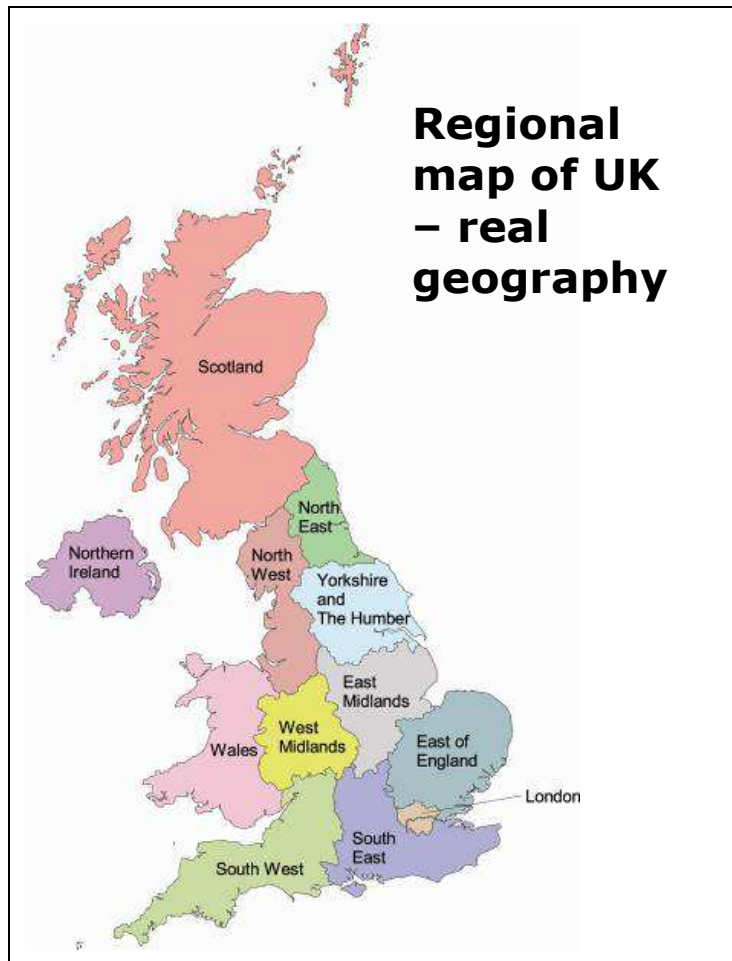


Real geometry of data



Data as a cartogram

Cartograms



Cartograms in ArcMap

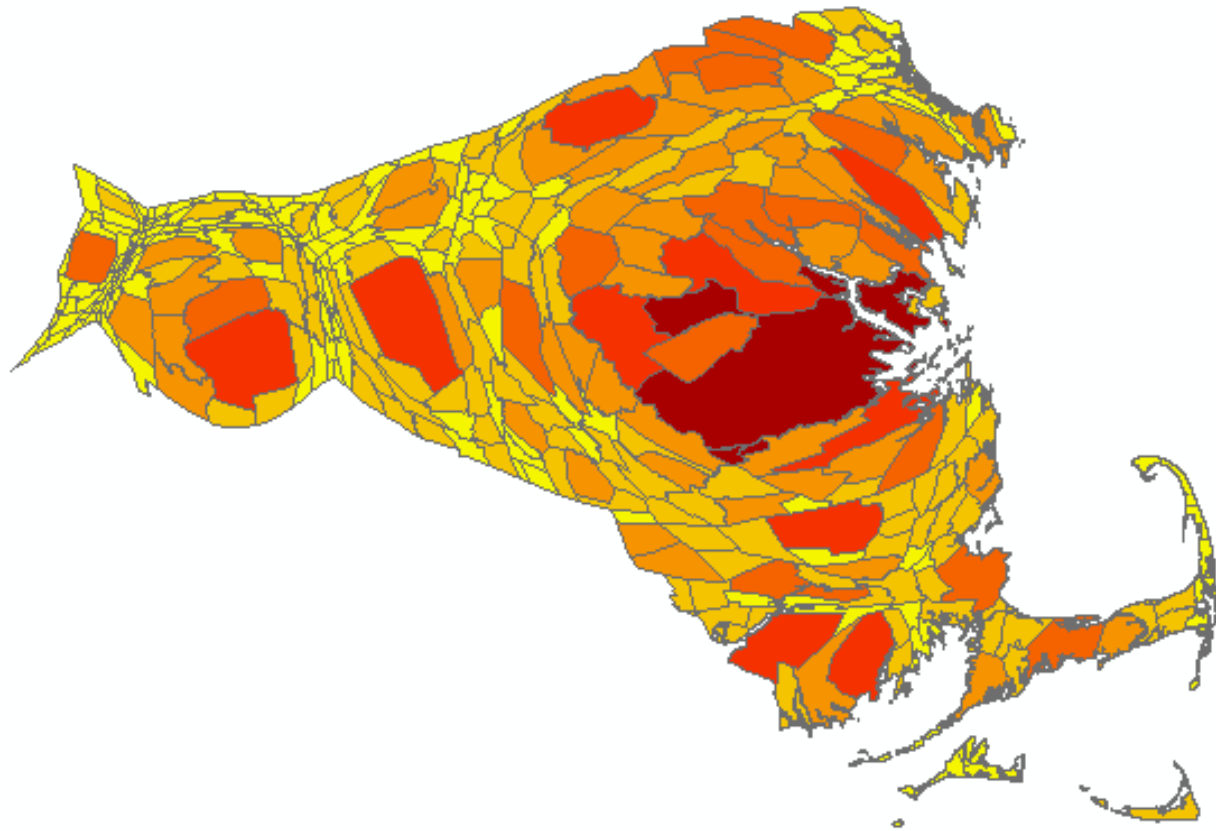
- ✦ Cartogram Geoprocessing Tool – creates new feature class based on a desired field. Output has the attributes of the original spatially-correct version, so they can be queried, etc.

<https://geonet.esri.com/blogs/aitorcalero/2015/08/03/creating-cartograms-with-arcgis-for-desktop-1031>

<http://www.arcgis.com/home/item.html?id=d348614c97264ae19b0311019a5f2276>

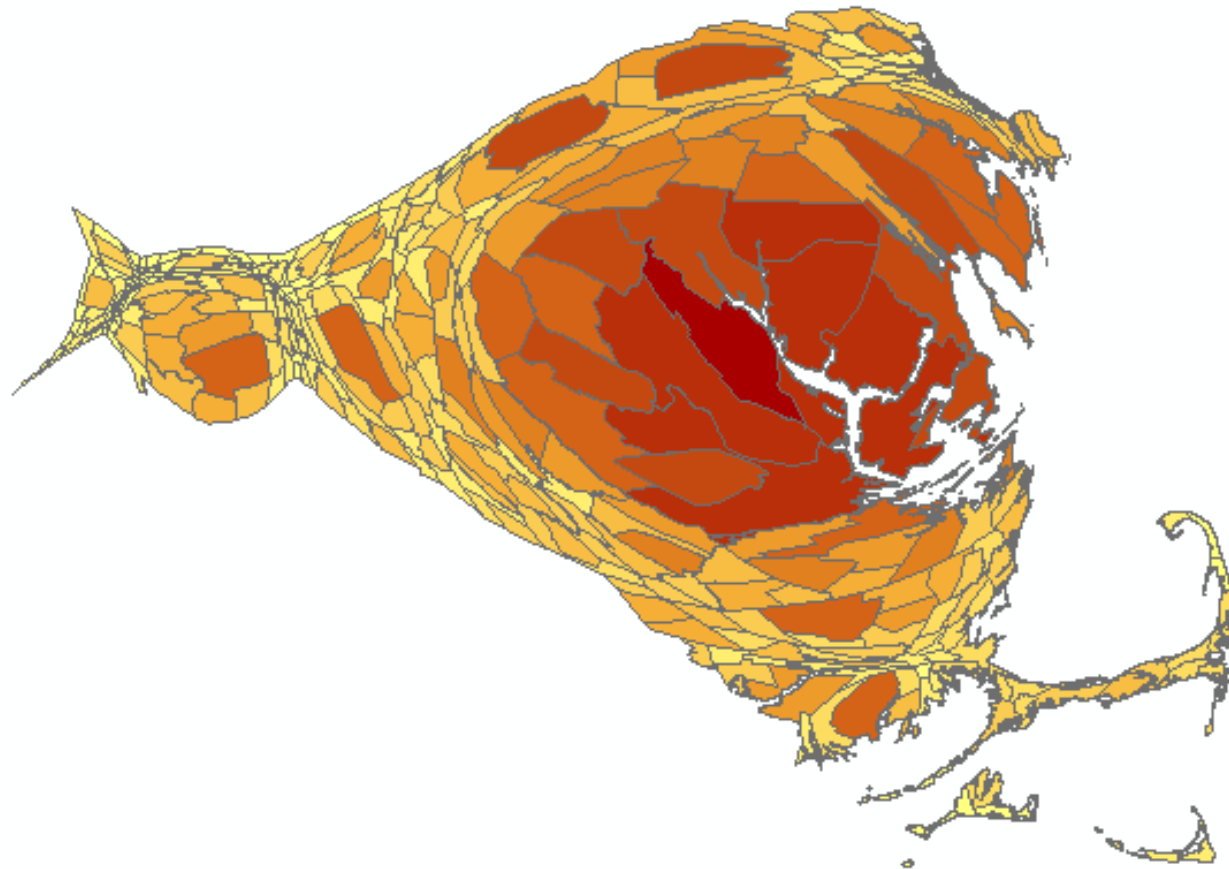
Cartograms in ArcMap

Mass. 2000 population raw values being used to size the polygons:



Cartograms in ArcMap

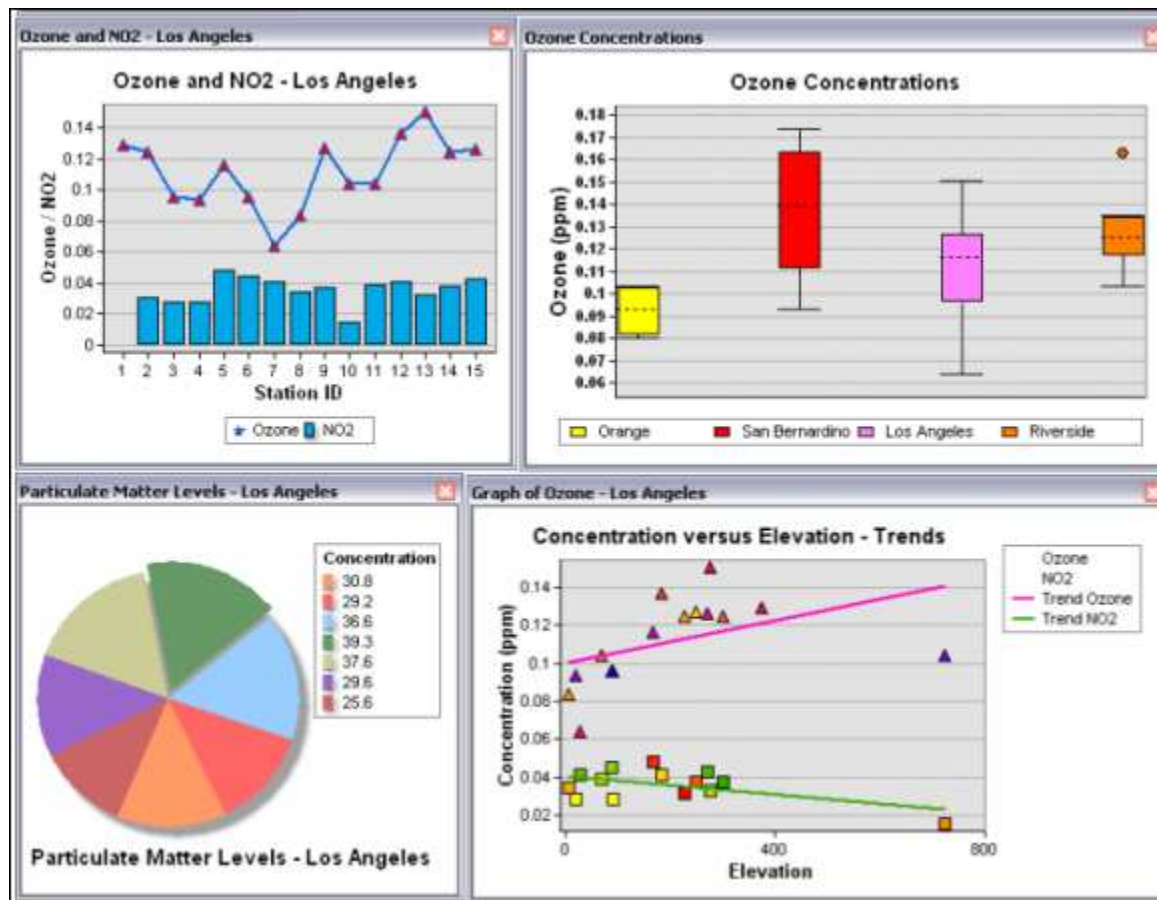
Mass. 2000 pop density (Somerville is #1):



Graphs

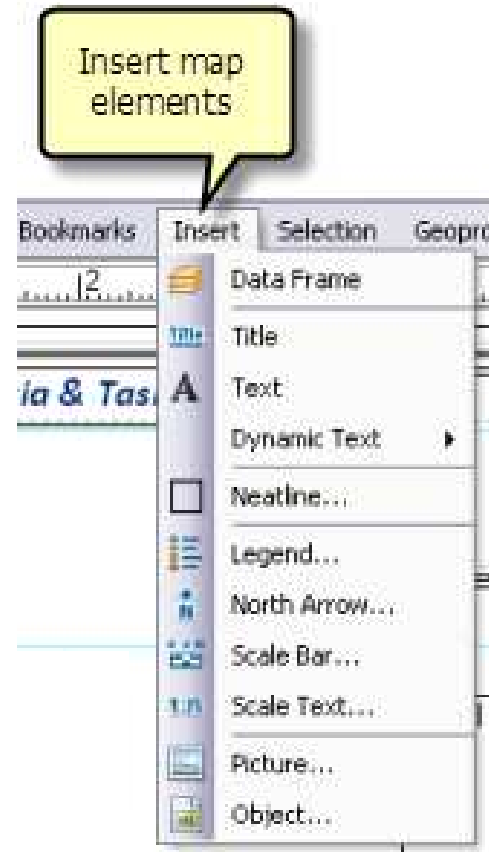
<http://desktop.arcgis.com/en/arcmap/latest/map/graphs/exploring-and-visualizing-data-with-graphs.htm>

- ✦ Add to layout; colors can be matched to data symbology



Inserting Graphics

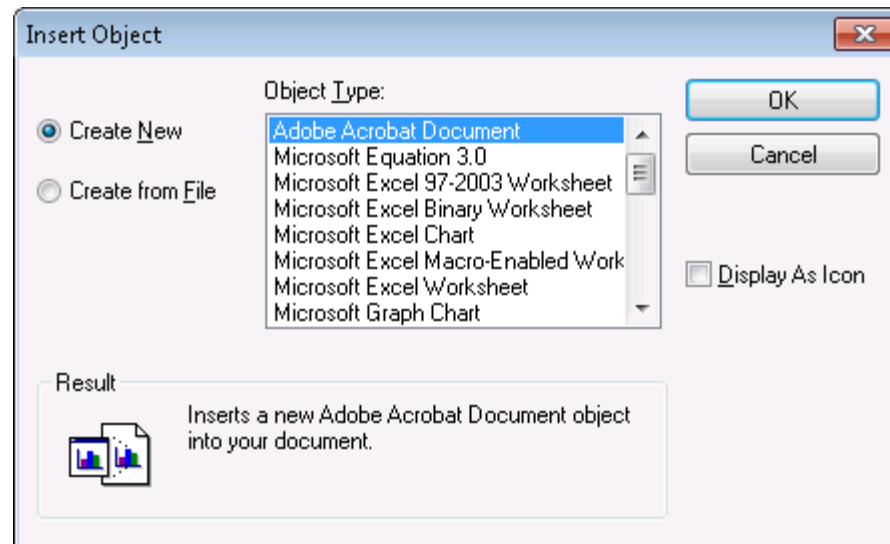
- ✦ Ornament a map
- ✦ Group related parts of a map together
- ✦ Identify a map with an organization
- ✦ Emphasize a part of the map



<http://desktop.arcgis.com/en/arcmap/latest/map/page-layouts/an-overview-of-working-with-graphics.htm>

Inserting Objects

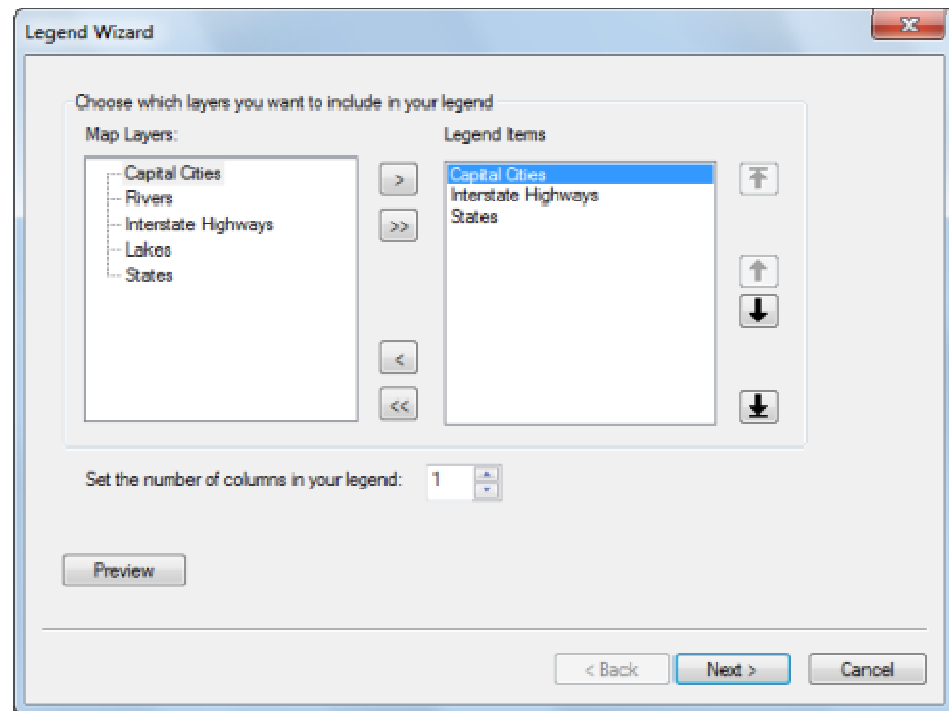
- ✦ Add other Windows objects -- which can be dynamic -- to a layout



<http://desktop.arcgis.com/en/arcmap/latest/map/page-layouts/working-with-graphic-elements-pictures-and-neatlin.htm>

Modifying Legends

- ✦ Create legend using the Legend Wizard
- ✦ Double-click legend to open the Legend Properties dialog box to modify the legend



<http://desktop.arcgis.com/en/arcmap/latest/map/page-layouts/working-with-legends.htm>

Create a new legend patch:

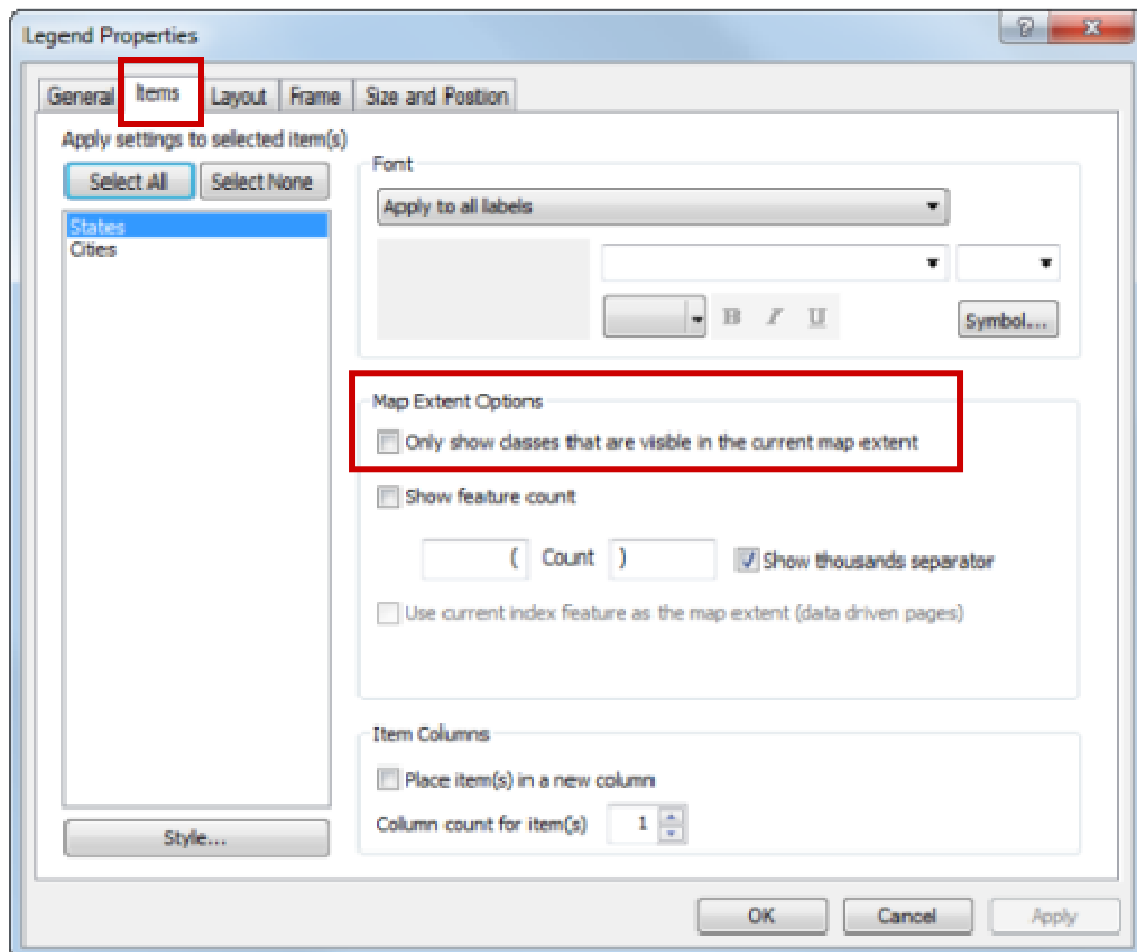
<http://desktop.arcgis.com/en/arcmap/latest/map/page-layouts/working-with-legend-patch-shapes.htm>

Dynamic Legends

✦ New at 10.1

If the Only show classes that are visible in the current map extent check box is checked, a legend item class will only appear in the legend if a feature from that class is in the current extent. If no features from that legend item are in the current extent, the entire item will be removed from the legend.

You can also add feature counts to your legend by checking the Show feature count check box.



Clipping the Data Frame

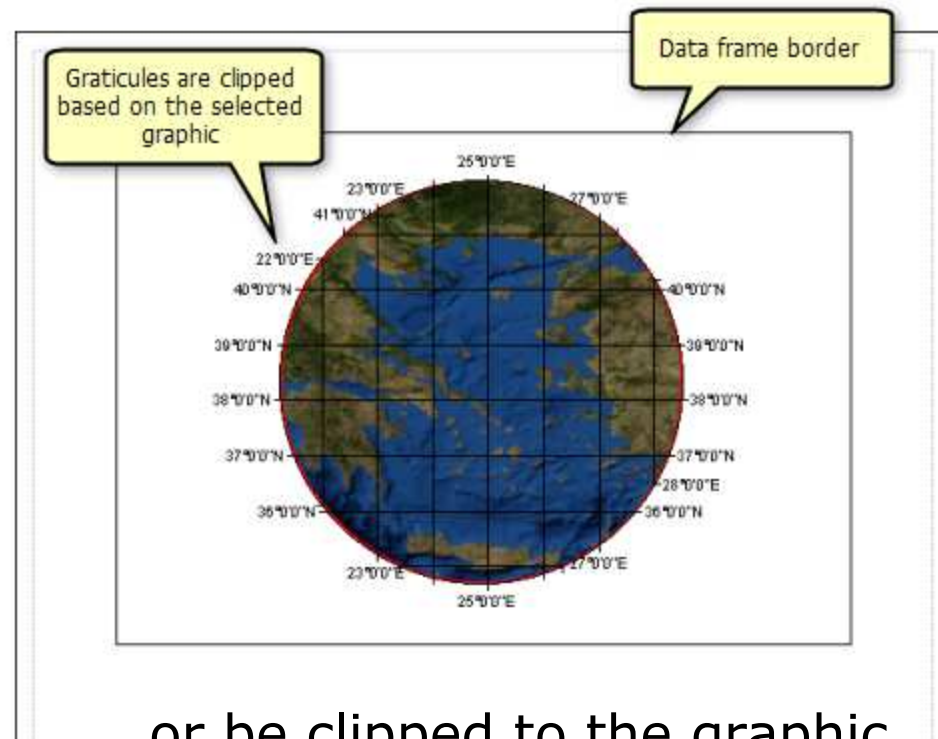
- ✦ Clip to graphic shape, extent of another data frame, or current data driven page extent



<http://desktop.arcgis.com/en/arcmap/latest/map/page-layouts/clipping-the-data-frame.htm>

Clipping with Grids and Graticules

- ✦ Grids and graticules may be left to fill the data frame...

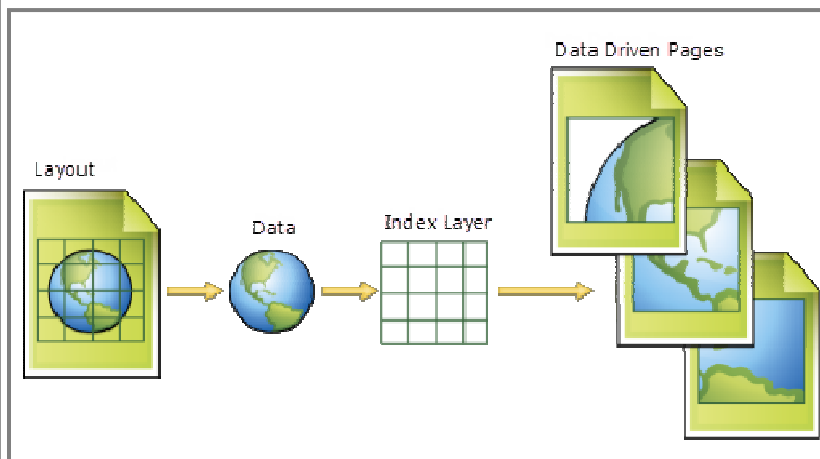


... or be clipped to the graphic

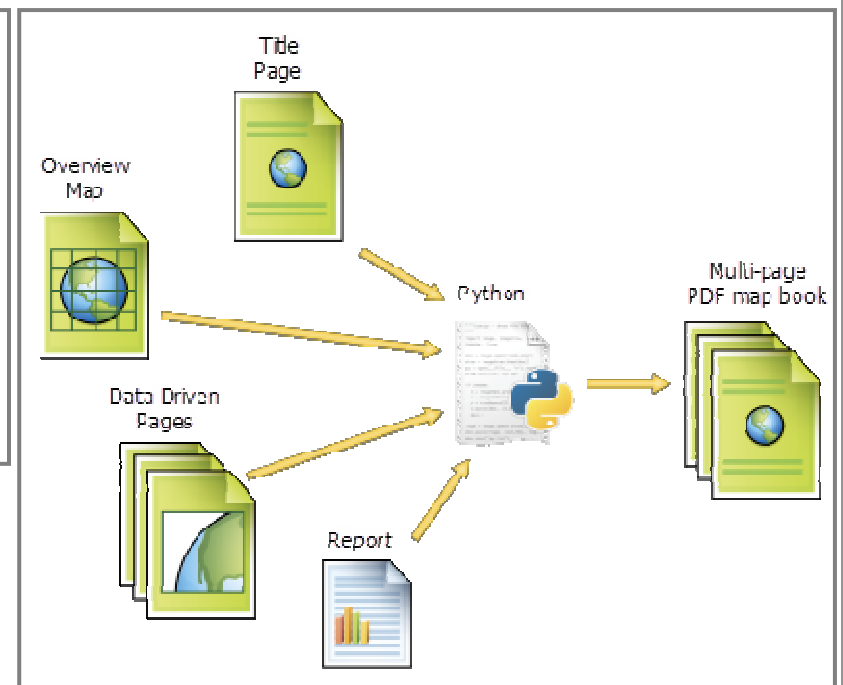
<http://desktop.arcgis.com/en/arcmap/latest/map/page-layouts/clipping-the-data-frame.htm>

Data Driven Pages

- ✦ Create a series of layout pages from a single map document, for viewing or printing a page at a time or as a “map book”

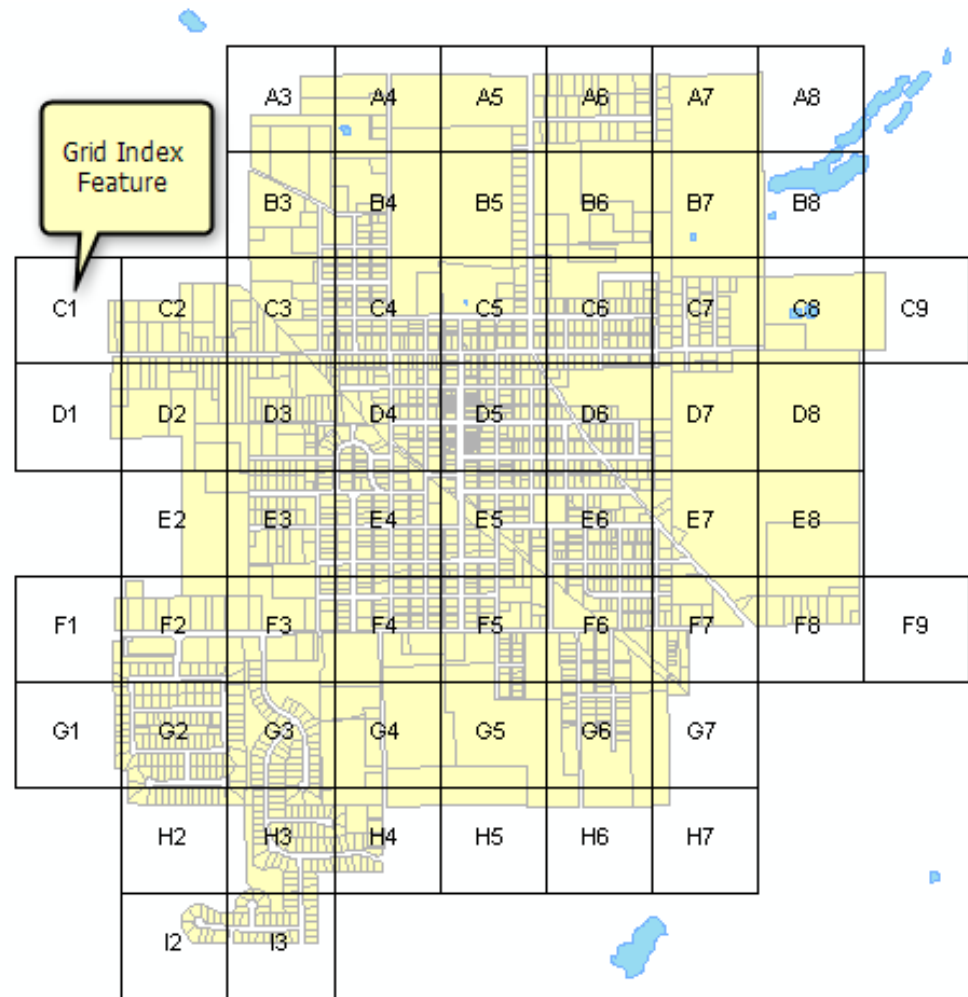


<http://desktop.arcgis.com/en/arcmap/latest/map/page-layouts/what-are-data-driven-pages-.htm>

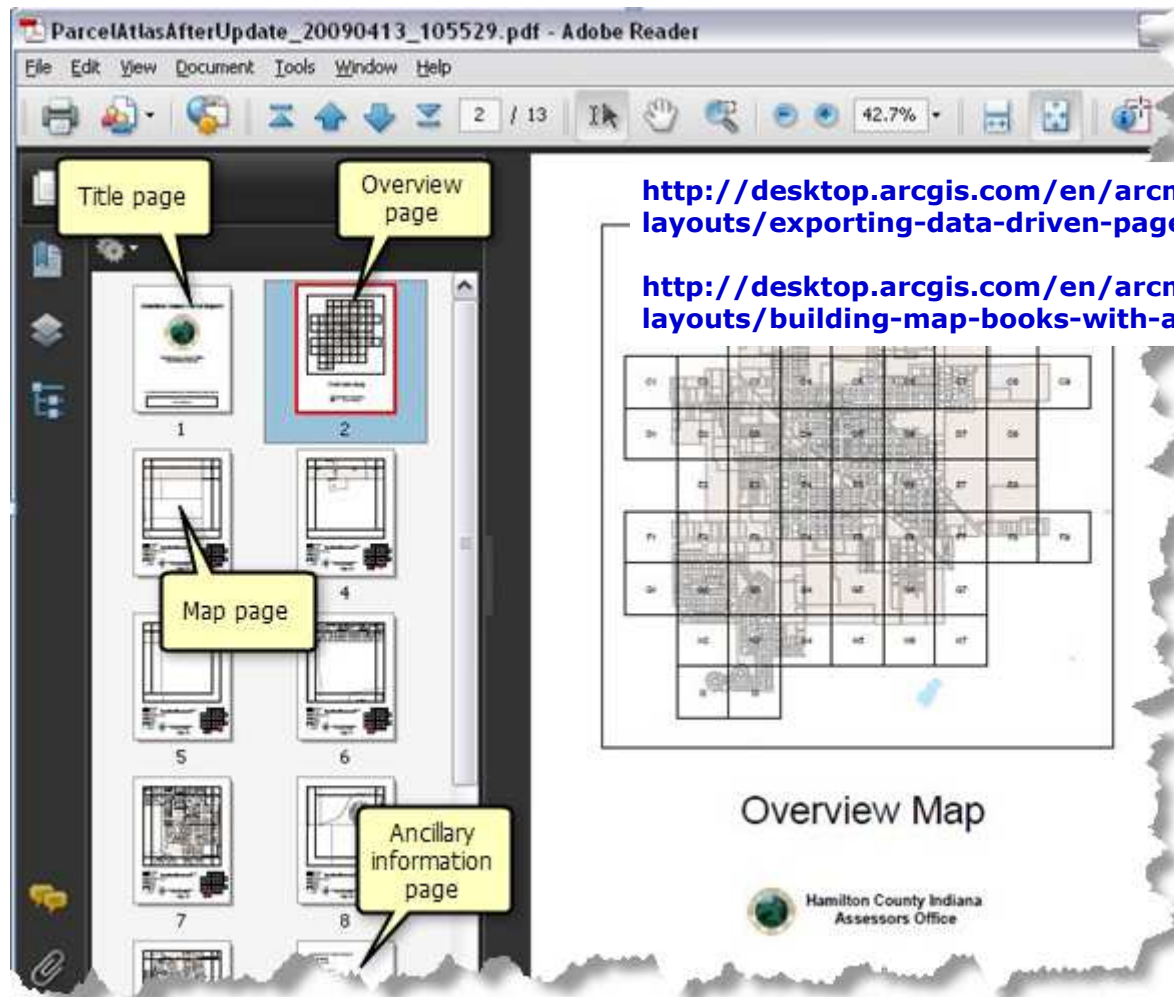


Data Driven Pages

Index layer can be grid or any polygon layer

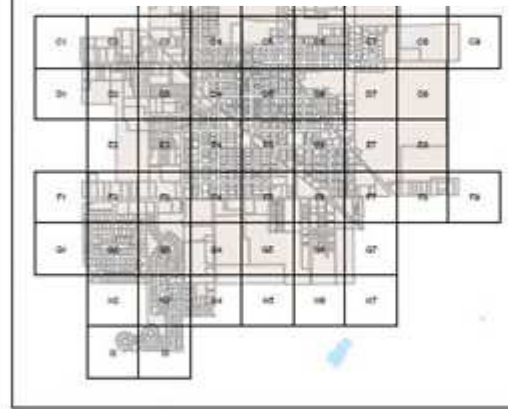


Map Books



<http://desktop.arcgis.com/en/arcmap/latest/map/page-layouts/exporting-data-driven-pages.htm>

<http://desktop.arcgis.com/en/arcmap/latest/map/page-layouts/building-map-books-with-arcgis.htm>



Overview Map

Hamilton County Indiana
Assessors Office

Dynamic Text

- ✦ Dynamic text is text placed on a map layout that changes based on the current properties of the map document, data frame, and Data Driven Page, such as:
 - A user name
 - The date a map document was saved
 - The file path for the map document
 - The page numbers and names that update automatically for each page in a series of Data Driven Pages

<http://desktop.arcgis.com/en/arcmap/latest/map/page-layouts/what-is-dynamic-text-.htm>

Map Automation Using Geoprocessing

- ✦ Use **arcpy.mapping**, a Python scripting module designed to:
 - manipulate the contents of existing map documents (.mxd) and layer files (.lyr)
 - automate exporting and printing
 - automate map production; it extends the capabilities of Data Driven Pages and is **required to build complete map books** because it includes functions to export to, create, and manage PDF documents.

<http://desktop.arcgis.com/en/arcmap/latest/map/working-with-arcmap/map-automation-using-geoprocessing.htm>

Other Resources

- ✦ <http://desktop.arcgis.com/en/arcmap/latest/map/working-with-layers/helpful-resources-for-layer-display.htm>
- ✦ <http://desktop.arcgis.com/en/arcmap/latest/map/working-with-layers/how-to-set-layer-transparency.htm>
(Common layer display tasks)
- ✦ <http://resources.arcgis.com/en/communities/mapping/home/>
- ✦ <https://blogs.esri.com/esri/arcgis/category/mapping/>
- ✦ <https://blogs.esri.com/esri/arcgis/2013/06/04/favorites-cartographers/>